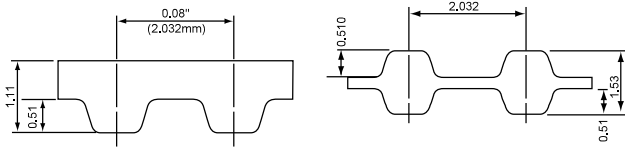
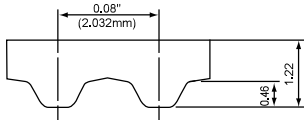


# Classical Type (D)MXL · T80

## GB Type (Rubber)



## U Type (Polyurethane) \*Single-sided only



● Product Code

**GB Type** **B** **125** **(D)MXL** **6.4** **GB**  
 Belt identifier Number of teeth Tooth Profile Width(mm) GB Type (rubber)

**U Type** **125** **T80** **6.4** **U**  
 Number of teeth Tooth Profile Width(mm) U Type (polyurethane)

Belt width lineup Table 1-3

Nominal width	Width (mm)	MXL	T80
3.2	3.2	○	○
4.8	4.8	○	○
6.4	6.4	○	○
8.0	8.0		○
9.5	9.5	○	○
12.7	12.7	○	

Belt weight per unit (kg/10mm x 1m) Table 1-4

Material	Tooth Profile	Belt weight
rubber	MXL	0.011
	DMXL	0.026
polyurethane	T80	0.010

## Standard belt size table

Nominal length	Number of teeth	Pitch length(mm)	Manufacturable Size	
			GB	U
30 MXL	30	60.96		S
34 MXL	34	69.09	S	
35 MXL	35	71.12	S	S
40 MXL	40	81.28	S	S
41 MXL	41	83.31	S	
45 MXL	45	91.44	S	S
46 MXL	46	93.47	S	S
48 MXL	48	97.54	S	S
49 MXL	49	99.57	S	
50 MXL	50	101.60	S	S
52 MXL	52	105.66	S	S
53 MXL	53	107.70	S	S
54 MXL	54	109.73	S	S
55 MXL	55	111.76	S	S
56 MXL	56	113.79	S	S
57 MXL	57	115.82	S	S
59 MXL	59	119.89	S	S
60 MXL	60	121.92	S	S
61 MXL	61	123.95	S	
63 MXL	63	128.02	S	S
65 MXL	65	132.08	S	S
66 MXL	66	134.11	S	
67 MXL	67	136.14	S	S
68 MXL	68	138.18	S	S
70 MXL	70	142.24	S	S
71 MXL	71	144.27	S	S
72 MXL	72	146.30	S	S
73 MXL	73	148.34	S	S
74 MXL	74	150.37	S	S
75 MXL	75	152.40	S	S
76 MXL	76	154.43	S	
77 MXL	77	156.46	S	S
78 MXL	78	158.50	S	S
79 MXL	79	160.53	S	
80 MXL	80	162.56	S	S
81 MXL	81	164.59	S	S
82 MXL	82	166.62	S	S
83 MXL	83	168.66	S	S
85 MXL	85	172.72	S	S
86 MXL	86	174.75	S	
87 MXL	87	176.78	S	S
88 MXL	88	178.82	S	S
89 MXL	89	180.85	S	S
90 MXL	90	182.88	S	S
91 MXL	91	184.91	S	S
92 MXL	92	186.94	S	
93 MXL	93	188.98	S	S
94 MXL	94	191.01	S	S
95 MXL	95	193.04	S	S
96 MXL	96	195.07	S	

Table 1-5

Nominal length	Number of teeth	Pitch length(mm)	Manufacturable Size	
			GB	U
97 MXL	97	197.10	S	S
98 MXL	98	199.14	S	S
100 MXL	100	203.20	S	S
101 MXL	101	205.23	S	
102 MXL	102	207.26	S	S
103 MXL	103	209.30	S	S
104 MXL	104	211.33	S	S
105 MXL	105	213.36	S	S
106 MXL	106	215.39	S	S
108 MXL	108	219.46	S	S
109 MXL	109	221.49	S	
110 MXL	110	223.52	S	S
112 MXL	112	227.58	S	S
114 MXL	114	231.65	S	S
115 MXL	115	233.68	S	S
118 MXL	118	239.78	S	S
120 MXL	120	243.84	S	S
121 MXL	121	245.87	S	S
122 MXL	122	247.90	S	S
123 MXL	123	249.94	S	S
124 MXL	124	251.97		S
125 MXL	125	254.00	S	S
126 MXL	126	256.03	S	S
127 MXL	127	258.06	S	
128 MXL	128	260.10	S	
130 MXL	130	264.16	S	S
131 MXL	131	266.19	S	S
132 MXL	132	268.22	S	S
134 MXL	134	272.29	S	
135 MXL	135	274.32	S	S
138 MXL	138	280.42	S	
140 MXL	140	284.48	S	S
142 MXL	142	288.54	S	S
144 MXL	144	292.61	S	S
145 MXL	145	294.64	S · D	S
146 MXL	146	296.67	S · D	
147 MXL	147	298.70	S · D	
148 MXL	148	300.74	S · D	S
150 MXL	150	304.80	S · D	S
152 MXL	152	308.86	S · D	
154 MXL	154	312.93	S · D	
155 MXL	155	314.96	S · D	S
156 MXL	156	316.99	S · D	S
157 MXL	157	319.02		S
158 MXL	158	321.06	S · D	
160 MXL	160	325.12	S · D	S
162 MXL	162	329.18	S · D	
165 MXL	165	335.28	S · D	S
170 MXL	170	345.44	S · D	S
171 MXL	171	347.47	S · D	

● S=Single-sided D=Double timing belt ● The design procedure and the defined drive capacity of single-sided timing belts are applied to the equivalent double-sided timing belts. ● Some sizes may not be in stock. Please contact us for the stock status before placing an order.

1 Properties



# Classical Type (D)MXL · T80

Standard belt size table

Table 1-5

Nominal length	Number of teeth	Pitch length(mm)	Manufacturable Size	
			GB	U
175 MXL	175	355.60	S · D	S
180 MXL	180	365.76	S · D	S
184 MXL	184	373.89	S · D	S
185 MXL	185	375.92	S · D	S
186 MXL	186	377.95	S · D	
187 MXL	187	379.98	S · D	
188 MXL	188	382.02	S · D	
190 MXL	190	386.08	S · D	S
192 MXL	192	390.14	S · D	
194 MXL	194	394.21	S · D	
195 MXL	195	396.24	S · D	S
198 MXL	198	402.34	S · D	
200 MXL	200	406.40	S · D	S
203 MXL	203	412.50	S · D	
205 MXL	205	416.56	S · D	S
208 MXL	208	422.66		S
210 MXL	210	426.72	S · D	S
212 MXL	212	430.78	S · D	S
215 MXL	215	436.88		S
219 MXL	219	445.01	S · D	S
220 MXL	220	447.04	S · D	S
221 MXL	221	449.07	S · D	S
222 MXL	222	451.10	S · D	
224 MXL	224	455.17	S · D	S
225 MXL	225	457.20		S
226 MXL	226	459.23	S · D	
227 MXL	227	461.26	S · D	
228 MXL	228	463.30	S · D	S
230 MXL	230	467.36	S · D	S
232 MXL	232	471.42	S · D	S
235 MXL	235	477.52		S · D
236 MXL	236	479.55	S · D	S
239 MXL	239	485.65	S · D	S
240 MXL	240	487.68	S · D	S
245 MXL	245	497.84	S · D	S
248 MXL	248	503.94	S · D	S
249 MXL	249	505.97		S
250 MXL	250	508.00	S · D	S · D
255 MXL	255	518.16		S
256 MXL	256	520.19	S · D	S
260 MXL	260	528.32	S · D	S
262 MXL	262	532.38	S · D	
265 MXL	265	538.48	S · D	S
270 MXL	270	548.64	S · D	S
273 MXL	273	554.74	S · D	
275 MXL	275	558.80	S · D	S
277 MXL	277	562.86		S
278 MXL	278	564.90	S · D	
279 MXL	279	566.93		S
280 MXL	280	568.96	S · D	S
281 MXL	281	570.99	S · D	
285 MXL	285	579.12	S · D	S
288 MXL	288	585.22	S · D	S
290 MXL	290	589.28	S · D	S
295 MXL	295	599.44	S · D	S
296 MXL	296	601.47		S
297 MXL	297	603.50	S · D	
300 MXL	300	609.60	S · D	S
304 MXL	304	617.73		S
305 MXL	305	619.76	S · D	
310 MXL	310	629.92	S · D	S
312 MXL	312	633.98	S · D	S
315 MXL	315	640.08	S · D	S
318 MXL	318	646.18	S · D	S
320 MXL	320	650.24	S · D	S
324 MXL	324	658.37	S · D	S
330 MXL	330	670.56	S · D	S

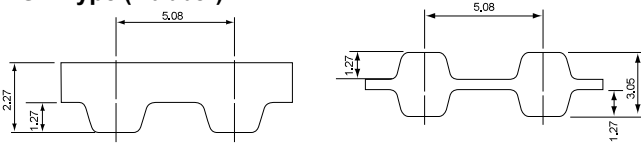
Nominal length	Number of teeth	Pitch length(mm)	Manufacturable Size	
			GB	U
332 MXL	332	674.62	S · D	
334 MXL	334	678.69	S · D	
336 MXL	336	682.75	S · D	S
337 MXL	337	684.78	S · D	
338 MXL	338	686.82	S · D	
339 MXL	339	688.85	S · D	
340 MXL	340	690.88		S
341 MXL	341	692.91		S
344 MXL	344	699.01	S · D	S
347 MXL	347	705.10	S · D	
348 MXL	348	707.14	S · D	
350 MXL	350	711.20	S · D	S
355 MXL	355	721.36	S · D	S
358 MXL	358	727.46		S
359 MXL	359	729.49	S · D	
360 MXL	360	731.52		S
364 MXL	364	739.65	S · D	
365 MXL	365	741.68	S · D	
367 MXL	367	745.74	S · D	
370 MXL	370	751.84		S
372 MXL	372	755.90	S · D	
380 MXL	380	772.16	S · D	S
386 MXL	386	784.35	S · D	
390 MXL	390	792.48		S
397 MXL	397	806.70	S · D	S
400 MXL	400	812.80	S · D	S
403 MXL	403	818.90		S
405 MXL	405	822.96	S · D	
411 MXL	411	835.15	S · D	
415 MXL	415	843.28	S · D	
419 MXL	419	851.41	S · D	
420 MXL	420	853.44	S · D	S
424 MXL	424	861.57	S · D	
434 MXL	434	881.89		S
435 MXL	435	883.92	S · D	
436 MXL	436	885.95	S · D	
438 MXL	438	890.02	S · D	
448 MXL	448	910.34	S · D	
453 MXL	453	920.50	S · D	
464 MXL	464	942.85	S · D	
473 MXL	473	961.14		S
474 MXL	474	963.17		S
475 MXL	475	965.20	S · D	
477 MXL	477	969.26	S · D	
478 MXL	478	971.30	S · D	
487 MXL	487	989.58	S · D	
500 MXL	500	1016.00	S · D	S
503 MXL	503	1022.10	S · D	
507 MXL	507	1030.22	S · D	
515 MXL	515	1046.48	S · D	S
516 MXL	516	1048.51	S · D	
520 MXL	520	1056.64	S · D	
525 MXL	525	1066.80	S · D	
535 MXL	535	1087.12	S · D	
537 MXL	537	1091.18	S · D	
548 MXL	548	1113.54	S · D	
550 MXL	550	1117.60	S · D	S
569 MXL	569	1156.21	S · D	
583 MXL	583	1184.66		S
591 MXL	591	1200.91	S · D	
650 MXL	650	1320.80	S · D	
705 MXL	705	1432.56	S · D	
772 MXL	772	1568.70	S · D	
916 MXL	916	1861.31		S
1369 MXL	1369	2781.81	S	

- S=Single-sided D=Double timing belt
- The design procedure and the defined drive capacity of single-sided timing belts are applied to the equivalent double-sided timing belts.
- Some sizes may not be in stock. Please contact us for the stock status before placing an order.

1  
Properties

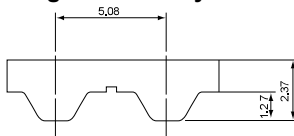
# Classical Type (D)XL

## GB Type (Rubber)



## U Type (Polyurethane)

\*Single-sided only



● Product Code

nominal width  
(inch) x 100 = 0.37 inch (9.5 mm)

**160**

**(D)XL**

**037**

**GB·(U)**

nominal length  
(inch) x 10 = 16 inch (406.40 mm)

Tooth Profile  
(DXL for Double timing belt)

GB Type (rubber) U Type (polyurethane)

Belt width lineup Table 1-6

Belt weight per unit (kg/10mm x 1m) Table 1-7

Nominal width	Width (mm)
025	6.4
031	7.9
037	9.5
050	12.7

Material	Tooth Profile	Belt weight
rubber	XL	0.022
	DXL	0.022
polyurethane	XL	0.020

## Standard belt size table

Nominal length	Number of teeth	Pitch length(mm)	Manufacturable Size	
			GB	U
60 XL	30	152.40	S	S
64 XL	32	162.56	S	S
66 XL	33	167.64		S
68 XL	34	172.72	S	
70 XL	35	177.80	S	S
74 XL	37	187.96	S	
76 XL	38	193.04	S	S
78 XL	39	198.12	S	S
80 XL	40	203.20	S	S
82 XL	41	208.28	S	
84 XL	42	213.36	S	S
86 XL	43	218.44	S	
88 XL	44	223.52	S	
90 XL	45	228.60	S	S
92 XL	46	233.68	S	
94 XL	47	238.76	S	S
96 XL	48	243.84	S	
98 XL	49	248.92	S	
100 XL	50	254.00	S	S
102 XL	51	259.08	S	S
104 XL	52	264.16	S	S
106 XL	53	269.24	S	S
108 XL	54	274.32	S	S
110 XL	55	279.40	S	S
112 XL	56	284.48	S	
114 XL	57	289.56	S	S
116 XL	58	294.64	S	S
118 XL	59	299.72	S	
120 XL	60	304.80	S	S
122 XL	61	309.88	S	
124 XL	62	314.96	S	S
126 XL	63	320.04	S	S
128 XL	64	325.12	S	S
130 XL	65	330.20	S	S
134 XL	67	340.36	S	
136 XL	68	345.44	S	S
138 XL	69	350.52	S	
140 XL	70	355.60	S	S
142 XL	71	360.68	S	S
144 XL	72	365.76	S	
146 XL	73	370.84	S	S
148 XL	74	375.92	S	S
150 XL	75	381.00	S · D	S
152 XL	76	386.08	S · D	S
154 XL	77	391.16	S · D	S
156 XL	78	396.24	S · D	
158 XL	79	401.32	S · D	
160 XL	80	406.40	S · D	S
162 XL	81	411.48	S · D	
164 XL	82	416.56	S · D	

Table 1-8

Nominal length	Number of teeth	Pitch length(mm)	Manufacturable Size	
			GB	U
166 XL	83	421.64	S · D	S
168 XL	84	426.72	S · D	S
170 XL	85	431.80	S · D	S
172 XL	86	436.88	S · D	
174 XL	87	441.96	S · D	
176 XL	88	447.04	S · D	S
178 XL	89	452.12	S · D	
180 XL	90	457.20	S · D	S
182 XL	91	462.28	S · D	
184 XL	92	467.36	S · D	
186 XL	93	472.44	S · D	S
188 XL	94	477.52	S · D	
190 XL	95	482.60	S · D	S
192 XL	96	487.68	S · D	
194 XL	97	492.76	S · D	
196 XL	98	497.84	S · D	
198 XL	99	502.92	S · D	
200 XL	100	508.00	S · D	S
202 XL	101	513.08	S · D	
204 XL	102	518.16	S · D	
206 XL	103	523.24	S · D	
210 XL	105	533.40	S · D	S
212 XL	106	538.48	S · D	S
216 XL	108	548.64	S · D	
218 XL	109	553.72	S · D	
220 XL	110	558.80	S · D	S
224 XL	112	568.96		S
228 XL	114	579.12	S · D	
230 XL	115	584.20	S · D	S
234 XL	117	594.36	S · D	
236 XL	118	599.44	S · D	
240 XL	120	609.60	S · D	S
250 XL	125	635.00	S · D	S
254 XL	127	645.16	S · D	S
260 XL	130	660.40	S · D	S
270 XL	135	685.80	S · D	S
276 XL	138	701.04	S · D	
280 XL	140	711.20	S · D	
282 XL	141	716.28	S · D	
290 XL	145	736.60	S · D	S
300 XL	150	762.00	S · D	S
310 XL	155	787.40	S · D	
314 XL	157	797.56	S · D	
320 XL	160	812.80	S · D	S
330 XL	165	838.20	S · D	S
332 XL	166	843.28	S · D	
340 XL	170	863.60	S · D	S
348 XL	174	883.92	S · D	S
352 XL	176	894.08	S · D	S
360 XL	180	914.40	S · D	S

● S=Single-sided D=Double timing belt ● The design procedure and the defined drive capacity of single-sided timing belts are applied to the equivalent double-sided timing belts. ● Some sizes may not be in stock. Please contact us for the stock status before placing an order.



# Classical Type (D)XL

Standard belt size table

Table 1-8

Nominal length	Number of teeth	Pitch length(mm)	Manufacturable Size	
			GB	U
364 XL	182	924.56	S · D	
370 XL	185	939.80	S · D	
376 XL	188	955.04	S · D	S
380 XL	190	965.20	S · D	
384 XL	192	975.36	S · D	S
388 XL	194	985.52	S · D	
390 XL	195	990.60	S · D	S
396 XL	198	1005.84	S · D	S
414 XL	207	1051.56	S · D	S
424 XL	212	1076.96	S · D	
430 XL	215	1092.20		S
450 XL	225	1143.00	S · D	
460 XL	230	1168.40	S · D	S
478 XL	239	1214.12	S · D	
480 XL	240	1219.20	S · D	S
490 XL	245	1244.60	S · D	S
512 XL	256	1300.48		S
522 XL	261	1325.88	S	
540 XL	270	1371.60	S	S
544 XL	272	1381.76		S
552 XL	276	1402.08	S	
564 XL	282	1432.56	S	S
592 XL	296	1503.68	S	
600 XL	300	1524.00	S	
616 XL	308	1564.64	S	
630 XL	315	1600.20	S	S
670 XL	335	1701.80	S	S
690 XL	345	1752.60	S	
730 XL	365	1854.20		S
754 XL	377	1915.16	S	
828 XL	414	2103.12	S	
842 XL	421	2138.68		S
860 XL	430	2184.40	S	

● S=Single-sided D=Double timing belt

● The design procedure and the defined drive capacity of single-sided timing belts are applied to the equivalent double-sided timing belts.

● Some sizes may not be in stock. Please contact us for the stock status before placing an order.

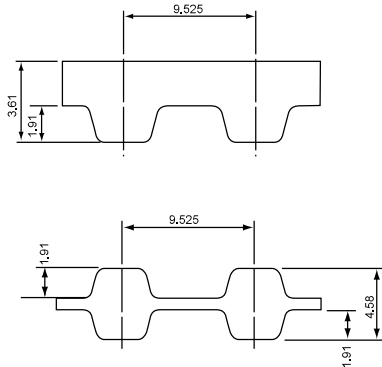
1

Properties



# Classical Type (D)L

## G Type (Rubber)



● Product Code

nominal width  
(inch) × 100 = 1 inch (25.4 mm)

**510**

**(D)L**

**100**

**G(U)**

nominal length  
(inch) × 10 = 51 inch (1295.40 mm)

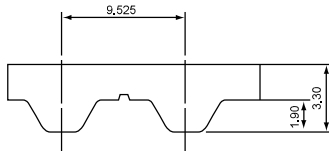
Tooth Profile  
(DL for Double timing belt)

G Type (rubber) U Type (polyurethane)

**Belt width lineup** Table 1-9 **Belt weight per unit (kg/10mm x 1m)** Table 1-10

Nominal width	Width (mm)	Material	Tooth Profile	Belt weight
050	12.7	rubber	L	0.032
075	19.1		DL	0.033
100	25.4	polyurethane	L	0.030
150	38.1			

## U Type (Polyurethane) \*Single-sided only



Standard belt size table

Nominal length	Number of teeth	Pitch length(mm)	Manufacturable Size	
			G	U
109 L	29	276.23	S	
124 L	33	314.33	S	S
135 L	36	342.90	S	
150 L	40	381.00	S	S
165 L	44	419.10	S	S
173 L	46	438.15	S	S
180 L	48	457.20	S	
187 L	50	476.25	S · D	S
210 L	56	533.40	S · D	S
217 L	58	552.45	S · D	
225 L	60	571.50	S · D	S
232 L	62	590.55	S · D	
240 L	64	609.60	S · D	S
255 L	68	647.70	S · D	S
265 L	71	676.28	S · D	
270 L	72	685.80	S · D	S
277 L	74	704.85	S · D	
285 L	76	723.90	S · D	S
300 L	80	762.00	S · D	S
304 L	81	771.53		S
315 L	84	800.10	S · D	
320 L	85	809.63	S · D	
322 L	86	819.15	S · D	S
334 L	89	847.73	S · D	
337 L	90	857.25	S · D	
345 L	92	876.30	S · D	S
360 L	96	914.40	S · D	

Table 1-11

Nominal length	Number of teeth	Pitch length(mm)	Manufacturable Size	
			G	U
367 L	98	933.45	S · D	S
375 L	100	952.50	S · D	S
382 L	102	971.55	S · D	
390 L	104	990.60	S · D	S
394 L	105	1000.13	S · D	
398 L	106	1009.65	S · D	
420 L	112	1066.80	S · D	S
427 L	114	1085.85	S · D	S
435 L	116	1104.90	S · D	
450 L	120	1143.00	S · D	S
454 L	121	1152.53	S · D	
480 L	128	1219.20	S · D	S
510 L	136	1295.40	S · D	S
525 L	140	1333.50	S · D	S
540 L	144	1371.60	S · D	S
548 L	146	1390.65	S · D	
581 L	155	1476.38	S · D	
600 L	160	1524.00	S · D	S
630 L	168	1600.20	S · D	
653 L	174	1657.35	S · D	
660 L	176	1676.40	S	
697 L	186	1771.65	S	
731 L	195	1857.37	S	
934 L	249	2371.72	S	
1174 L	313	2981.33	S	
1264 L	337	3209.93	S	

● S=Single-sided D=Double timing belt

● The design procedure and the defined drive capacity of single-sided timing belts are applied to the equivalent double-sided timing belts.

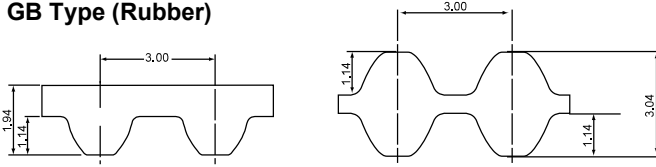
● Some sizes may not be in stock. Please contact us for the stock status before placing an order.

1  
Properties

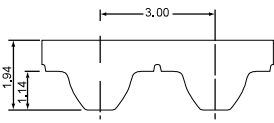


# SUPER TORQUE (D)S3M

GB Type (Rubber)



U Type (Polyurethane) \*Single-sided only



● Product Code

100

(D)S3M

459

GB(U)

Nominal width (mm) × 10

Tooth Profile (DS3M for Double timing belt)

Nominal length(mm)

GB Type (rubber) U Type (polyurethane)

Belt width lineup Table 1-36

Nominal width	Width (mm)
60	6
100	10
150	15

Belt weight per unit (kg/10mm x 1m) Table 1-37

Material	Tooth Profile	Belt weight
rubber	S3M	0.019
	DS3M	0.022
polyurethane	S3M	0.015

Standard belt size table

Nominal length	Number of teeth	Pitch length(mm)	Manufacturable Size	
			GB	U
S3M 96	32	96	S	
S3M 102	34	102	S	
S3M 114	38	114	S	
S3M 117	39	117	S	
S3M 120	40	120	S	
S3M 123	41	123	S	
S3M 129	43	129	S	
S3M 132	44	132	S	
S3M 135	45	135	S	
S3M 141	47	141	S	S
S3M 144	48	144	S	S
S3M 147	49	147	S	
S3M 150	50	150	S	
S3M 156	52	156	S	
S3M 159	53	159	S	
S3M 162	54	162	S	S
S3M 168	56	168	S	
S3M 171	57	171	S	
S3M 174	58	174	S	S
S3M 177	59	177	S	S
S3M 180	60	180	S	S
S3M 186	62	186	S	S
S3M 189	63	189	S	S
S3M 192	64	192	S	S
S3M 195	65	195	S	S
S3M 198	66	198	S	
S3M 201	67	201	S	S
S3M 204	68	204	S	
S3M 207	69	207	S	
S3M 210	70	210	S	S
S3M 213	71	213	S	S
S3M 216	72	216	S	
S3M 219	73	219	S	S
S3M 222	74	222	S	
S3M 225	75	225	S	S
S3M 228	76	228	S	
S3M 231	77	231	S	
S3M 234	78	234	S	
S3M 237	79	237	S	
S3M 246	82	246	S	S
S3M 249	83	249	S	S
S3M 252	84	252	S	S
S3M 255	85	255	S	S
S3M 258	86	258	S	
S3M 261	87	261	S	
S3M 264	88	264	S	S
S3M 267	89	267	S	
S3M 270	90	270	S	

Table 1-38

Nominal length	Number of teeth	Pitch length(mm)	Manufacturable Size	
			GB	U
S3M 273	91	273	S	
S3M 276	92	276	S	S
S3M 279	93	279	S	
S3M 282	94	282	S	
S3M 285	95	285	S	
S3M 288	96	288	S	S
S3M 291	97	291	S	
S3M 300	100	300	S · D	S
S3M 303	101	303	S · D	
S3M 306	102	306	S · D	
S3M 309	103	309	S · D	
S3M 312	104	312	S · D	S
S3M 315	105	315	S · D	
S3M 318	106	318	S · D	S
S3M 324	108	324	S · D	
S3M 327	109	327	S · D	S
S3M 330	110	330	S · D	
S3M 333	111	333	S · D	
S3M 339	113	339	S · D	
S3M 342	114	342	S · D	
S3M 345	115	345	S · D	S
S3M 348	116	348	S · D	
S3M 351	117	351	S · D	
S3M 354	118	354	S · D	
S3M 360	120	360	S · D	S
S3M 363	121	363	S · D	S
S3M 366	122	366	S · D	
S3M 369	123	369	S · D	S
S3M 372	124	372	S · D	
S3M 375	125	375	S · D	S
S3M 378	126	378	S · D	S
S3M 384	128	384	S · D	
S3M 387	129	387	S · D	S
S3M 393	131	393	S · D	
S3M 396	132	396	S · D	S
S3M 399	133	399	S · D	
S3M 402	134	402	S · D	S
S3M 405	135	405	S · D	S
S3M 408	136	408	S · D	S
S3M 414	138	414	S · D	
S3M 417	139	417	S · D	
S3M 420	140	420	S · D	S
S3M 423	141	423	S · D	
S3M 426	142	426	S · D	
S3M 432	144	432	S · D	S
S3M 435	145	435	S · D	
S3M 444	148	444	S · D	
S3M 447	149	447	S · D	

● S=Single-sided D=Double timing belt

● The design procedure and the defined drive capacity of single-sided timing belts are applied to the equivalent double-sided timing belts.

● Some sizes may not be in stock. Please contact us for the stock status before placing an order.

1 Properties



# SUPER TORQUE (D)S3M

Standard belt size table

Table 1-38

Nominal length	Number of teeth	Pitch length(mm)	Manufacturable Size	
			GB	U
S3M 453	151	453	S · D	S
S3M 456	152	456	S · D	
S3M 459	153	459	S · D	S
S3M 468	156	468	S · D	
S3M 471	157	471	S · D	
S3M 474	158	474	S · D	S
S3M 480	160	480	S · D	
S3M 483	161	483	S · D	S
S3M 486	162	486	S · D	
S3M 489	163	489	S · D	
S3M 492	164	492	S · D	
S3M 498	166	498	S · D	
S3M 501	167	501	S · D	S
S3M 504	168	504	S · D	
S3M 507	169	507	S · D	
S3M 510	170	510	S · D	
S3M 513	171	513	S · D	
S3M 516	172	516	S · D	
S3M 519	173	519	S · D	S
S3M 522	174	522	S · D	
S3M 525	175	525	S · D	
S3M 528	176	528	S · D	
S3M 537	179	537	S · D	S
S3M 540	180	540	S · D	S
S3M 543	181	543	S · D	
S3M 549	183	549	S · D	
S3M 552	184	552	S · D	
S3M 558	186	558	S · D	
S3M 561	187	561	S · D	
S3M 564	188	564	S · D	S
S3M 570	190	570	S · D	
S3M 573	191	573	S · D	
S3M 576	192	576	S · D	
S3M 579	193	579	S · D	
S3M 582	194	582	S · D	
S3M 588	196	588	S · D	
S3M 591	197	591	S · D	S
S3M 597	199	597	S · D	
S3M 600	200	600	S · D	S
S3M 603	201	603	S · D	
S3M 609	203	609	S · D	
S3M 612	204	612	S · D	
S3M 621	207	621	S · D	
S3M 624	208	624	S · D	
S3M 633	211	633	S · D	S
S3M 642	214	642	S · D	
S3M 645	215	645	S · D	S
S3M 648	216	648	S · D	
S3M 657	219	657	S · D	
S3M 660	220	660	S · D	
S3M 663	221	663	S · D	
S3M 666	222	666	S · D	
S3M 669	223	669	S · D	
S3M 672	224	672	S · D	
S3M 681	227	681	S · D	S
S3M 687	229	687	S · D	
S3M 693	231	693	S · D	
S3M 699	233	699	S · D	
S3M 720	240	720	S · D	
S3M 726	242	726	S · D	
S3M 741	247	741	S · D	S
S3M 744	248	744	S · D	
S3M 750	250	750	S · D	S
S3M 753	251	753	S · D	
S3M 756	252	756	S · D	
S3M 759	253	759	S · D	

Nominal length	Number of teeth	Pitch length(mm)	Manufacturable Size	
			GB	U
S3M 762	254	762	S · D	
S3M 765	255	765	S · D	
S3M 771	257	771	S · D	
S3M 774	258	774	S · D	
S3M 786	262	786	S · D	
S3M 789	263	789	S · D	
S3M 804	268	804	S · D	
S3M 810	270	810	S · D	
S3M 819	273	819	S · D	
S3M 825	275	825	S · D	
S3M 831	277	831	S · D	
S3M 837	279	837	S · D	
S3M 852	284	852	S · D	
S3M 858	286	858	S · D	
S3M 882	294	882	S · D	
S3M 888	296	888	S · D	
S3M 894	298	894	S · D	
S3M 900	300	900	S · D	
S3M 909	303	909	S · D	
S3M 918	306	918	S · D	
S3M 927	309	927	S · D	
S3M 936	312	936	S · D	
S3M 954	318	954	S · D	
S3M 963	321	963	S · D	
S3M 999	333	999	S · D	
S3M 1005	335	1005	S · D	
S3M 1014	338	1014	S · D	
S3M 1017	339	1017	S · D	
S3M 1035	345	1035	S · D	
S3M 1050	350	1050	S · D	
S3M 1080	360	1080	S · D	
S3M 1113	371	1113	S · D	
S3M 1119	373	1119	S · D	
S3M 1146	382	1146	S · D	
S3M 1152	384	1152	S · D	
S3M 1170	390	1170	S · D	
S3M 1176	392	1176	S · D	
S3M 1188	396	1188	S · D	
S3M 1203	401	1203	S · D	
S3M 1221	407	1221	S · D	
S3M 1236	412	1236	S · D	
S3M 1245	415	1245	S · D	
S3M 1260	420	1260	S · D	
S3M 1290	430	1290	S · D	
S3M 1299	433	1299	S · D	
S3M 1305	435	1305	S · D	
S3M 1326	442	1326	S · D	
S3M 1332	444	1332	S · D	
S3M 1374	458	1374	S · D	
S3M 1401	467	1401	S · D	
S3M 1419	473	1419	S · D	
S3M 1422	474	1422	S · D	
S3M 1461	487	1461	S · D	
S3M 1521	507	1521	S · D	
S3M 1560	520	1560		S
S3M 1596	532	1596	S · D	
S3M 1650	550	1650	S · D	
S3M 1680	560	1680	S · D	
S3M 1788	596	1788	S · D	
S3M 2100	700	2100	S · D	
S3M 2115	705	2115	S · D	
S3M 2250	750	2250	S · D	



- S=Single-sided D=Double timing belt
- The design procedure and the defined drive capacity of single-sided timing belts are applied to the equivalent double-sided timing belts.
- Some sizes may not be in stock. Please contact us for the stock status before placing an order.